

# GLAERE - macroplankton

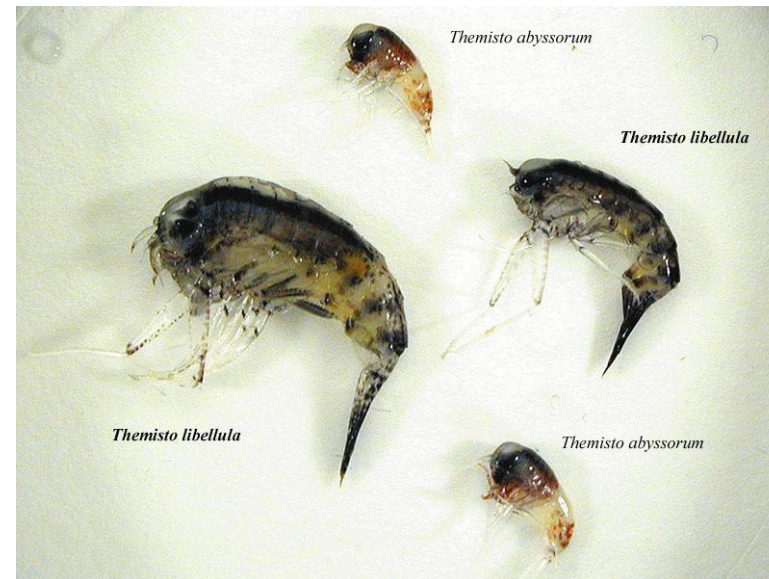
JM Weslawski IOPAN

Gear – Tucker trawl 1m<sup>2</sup>, 1mm mesh size

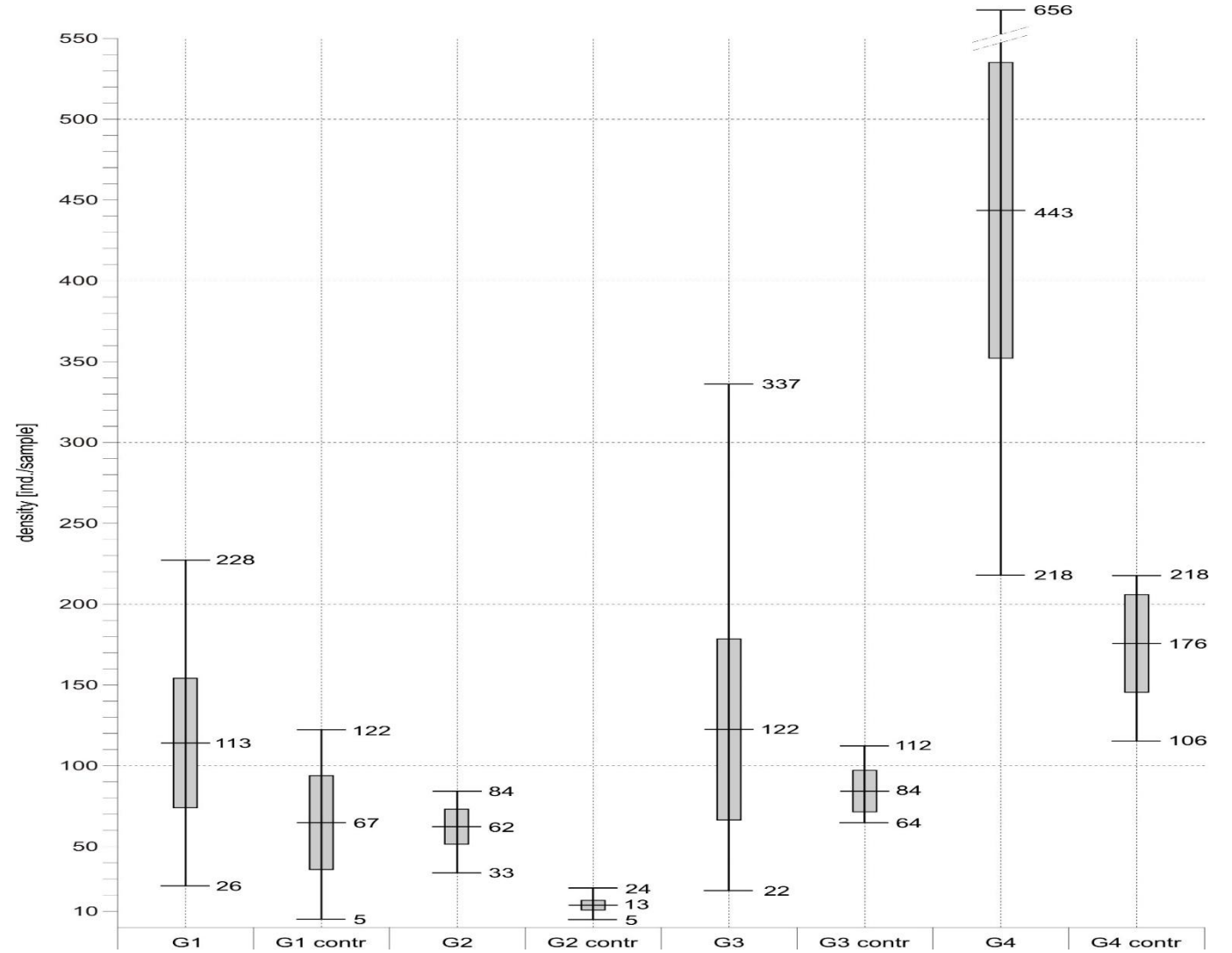
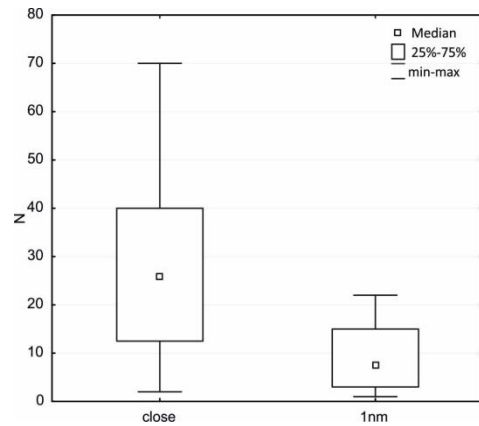
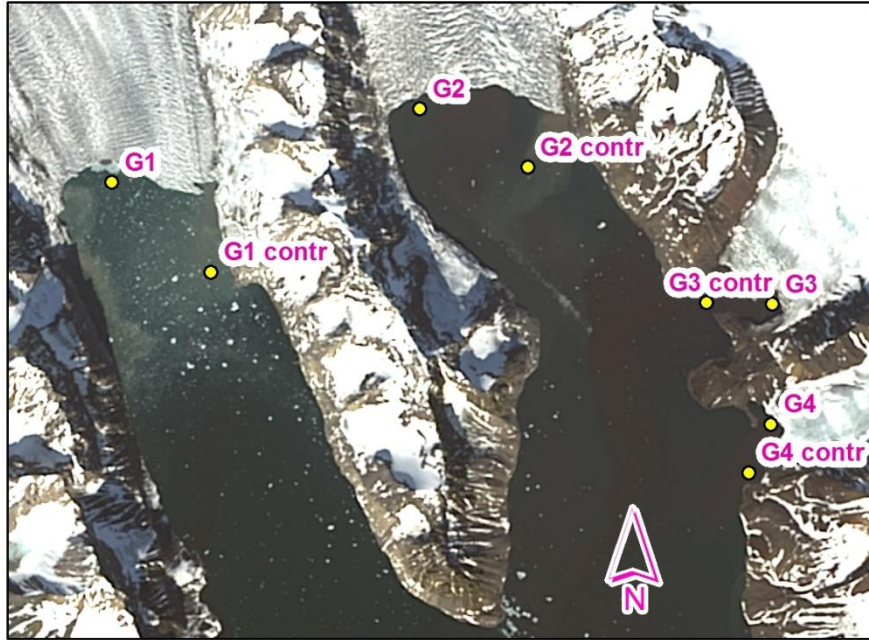
Drop camera, down to 200m deep



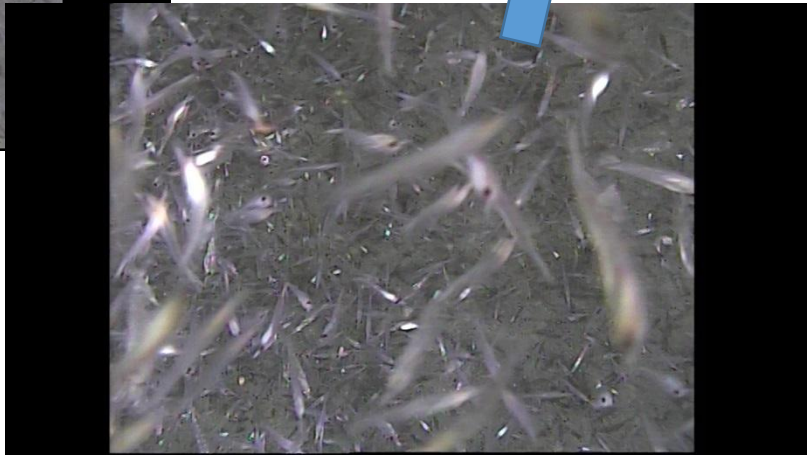
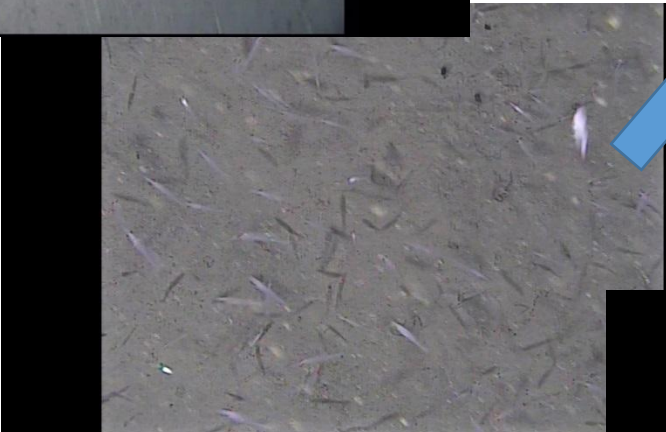
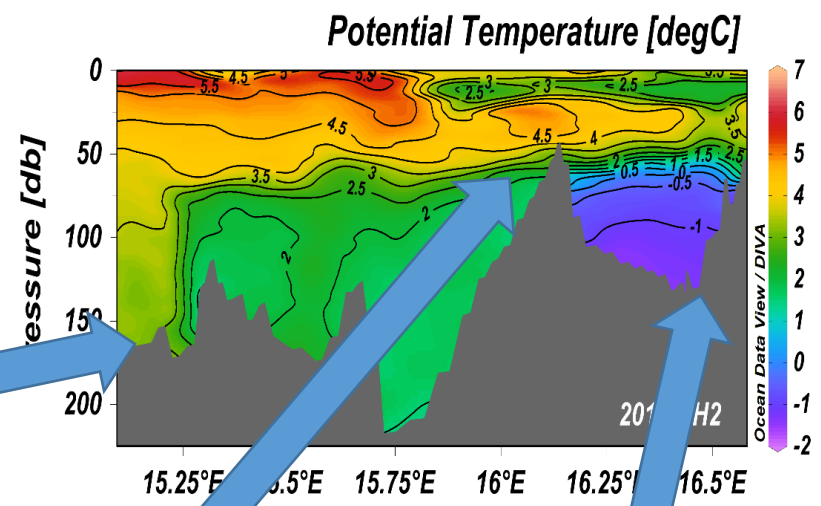
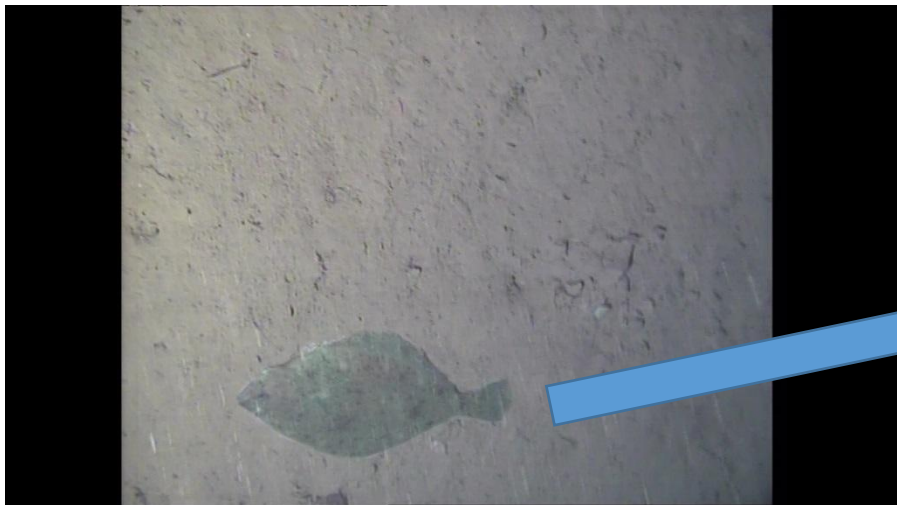
Objects: euphausiids, hyperiids



# Neuston – near surface net results – Hornsund 2015

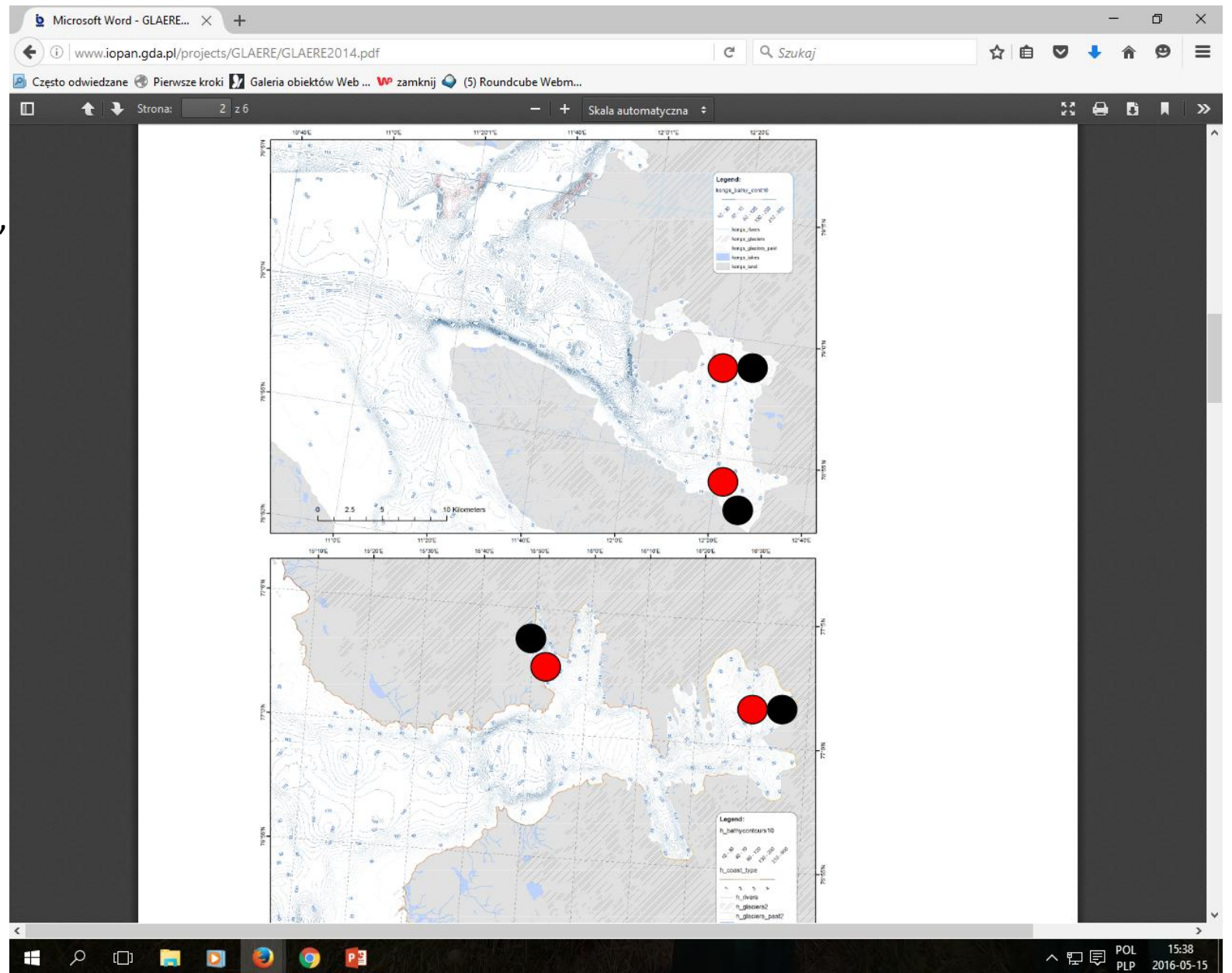


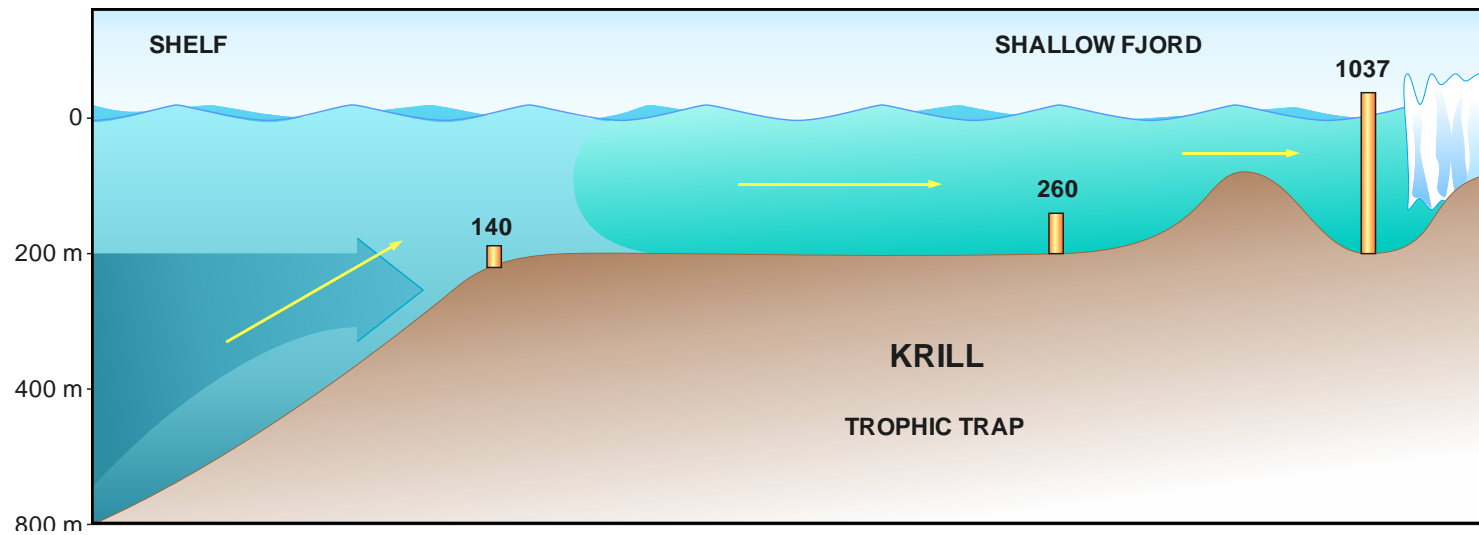
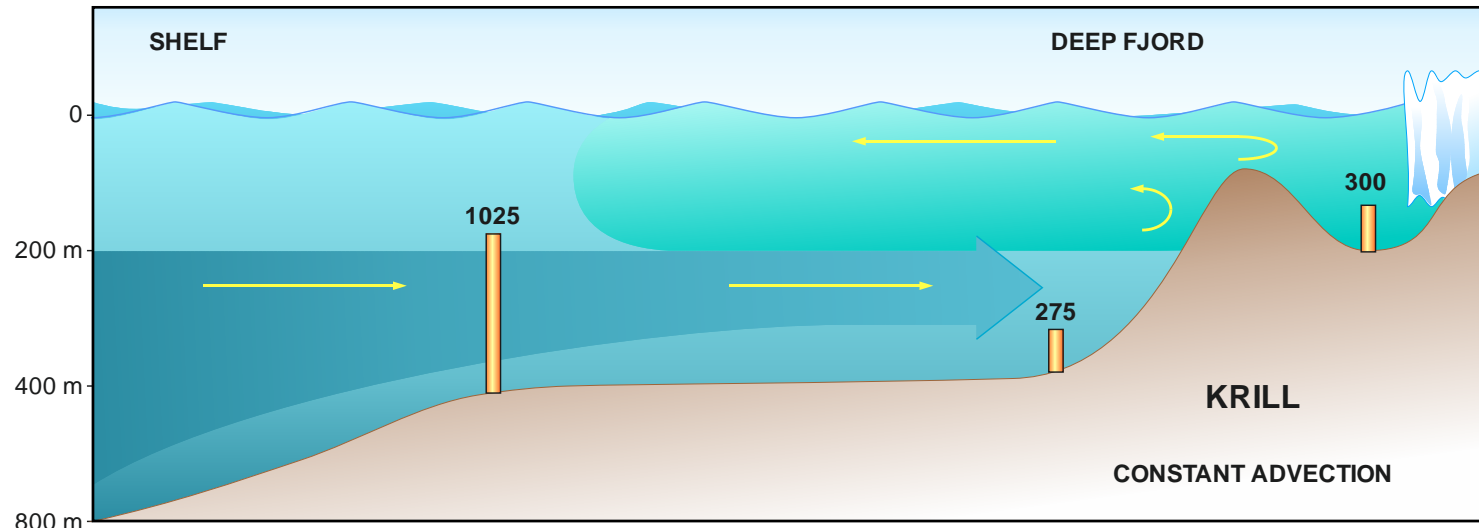




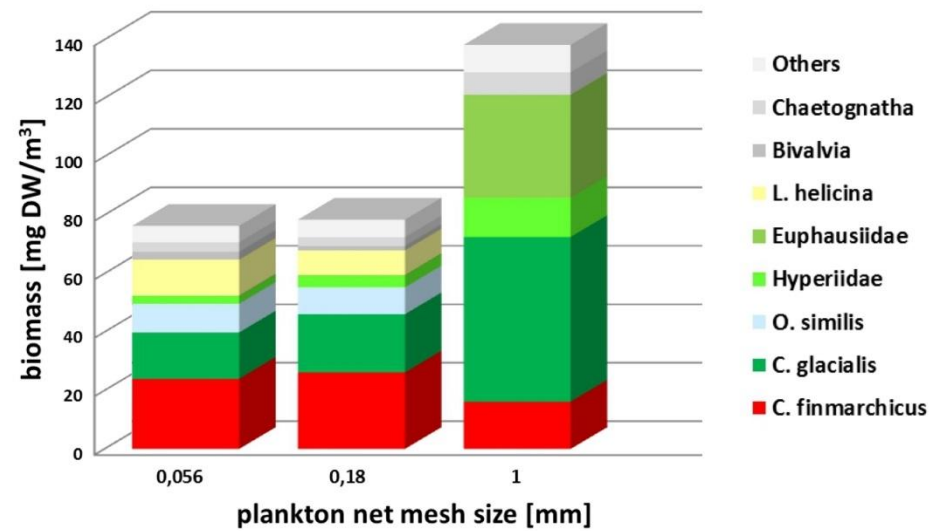
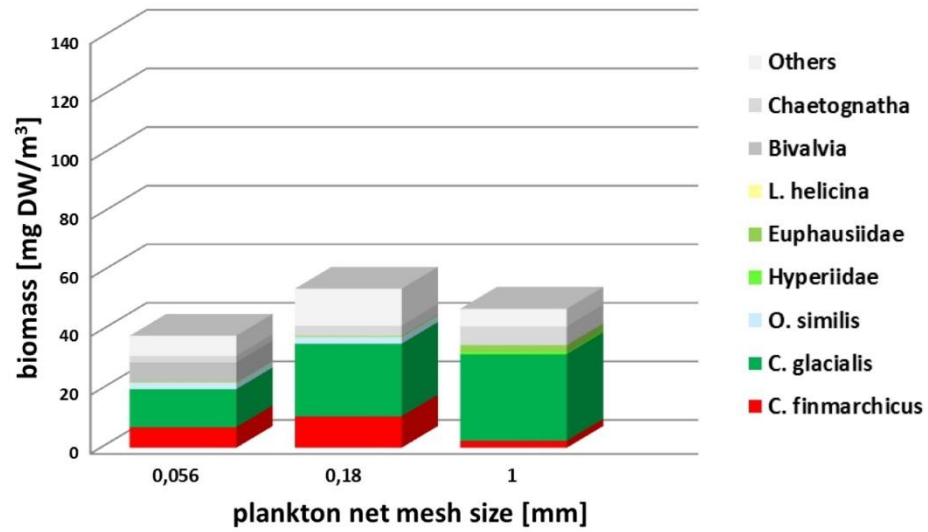
Hornsund, summer 2015, seabed photos

Stations sampled for macroplankton in 2014 and 2015, (planned for 2016)



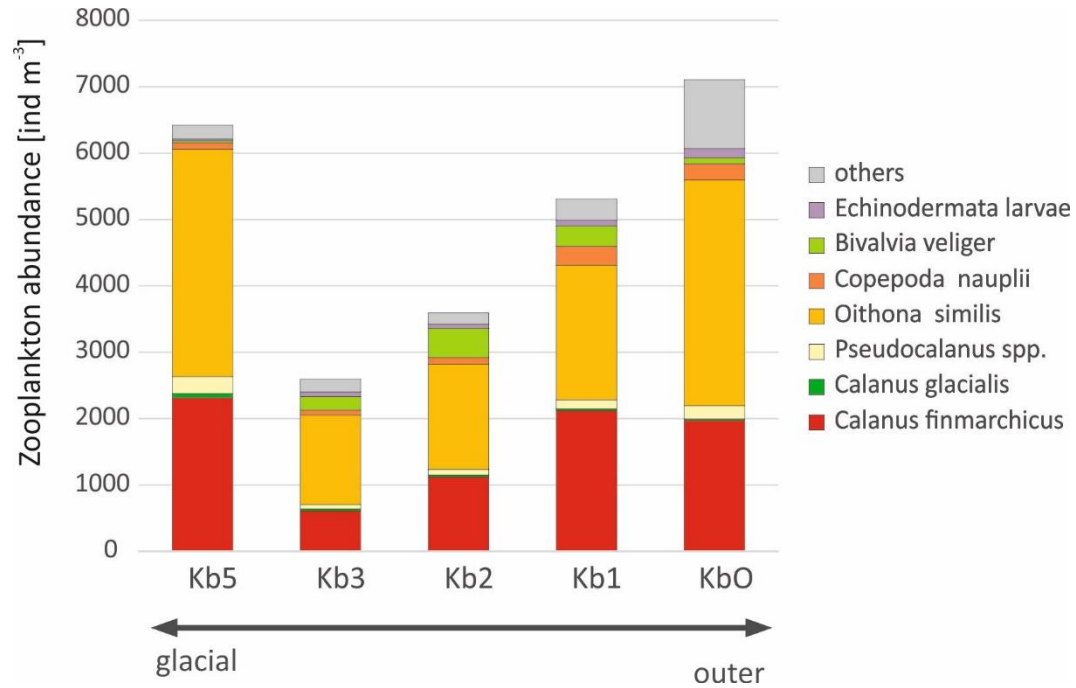


# Hornsund and Kongsfjorden – zooplankton size and biomass summer 2015



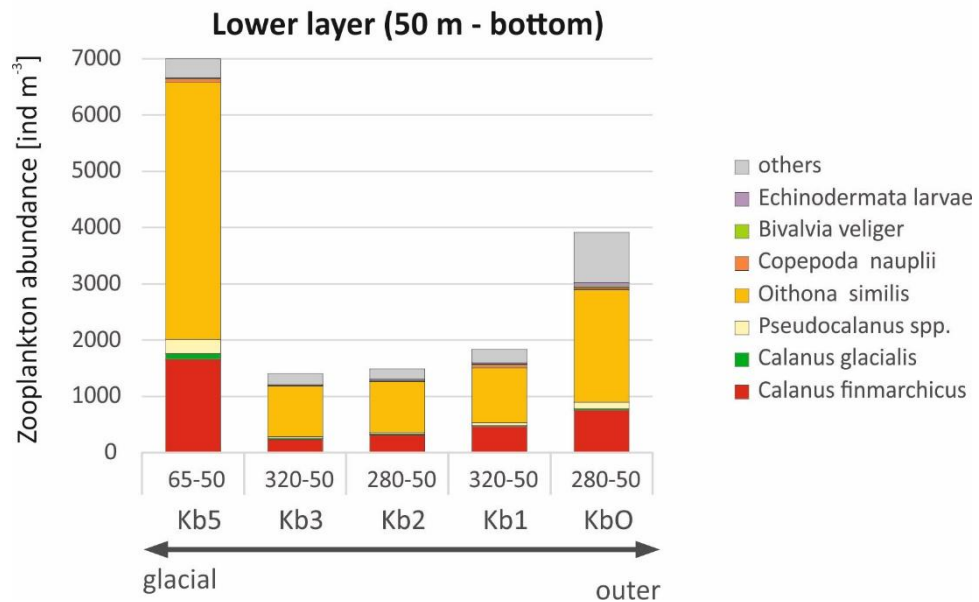
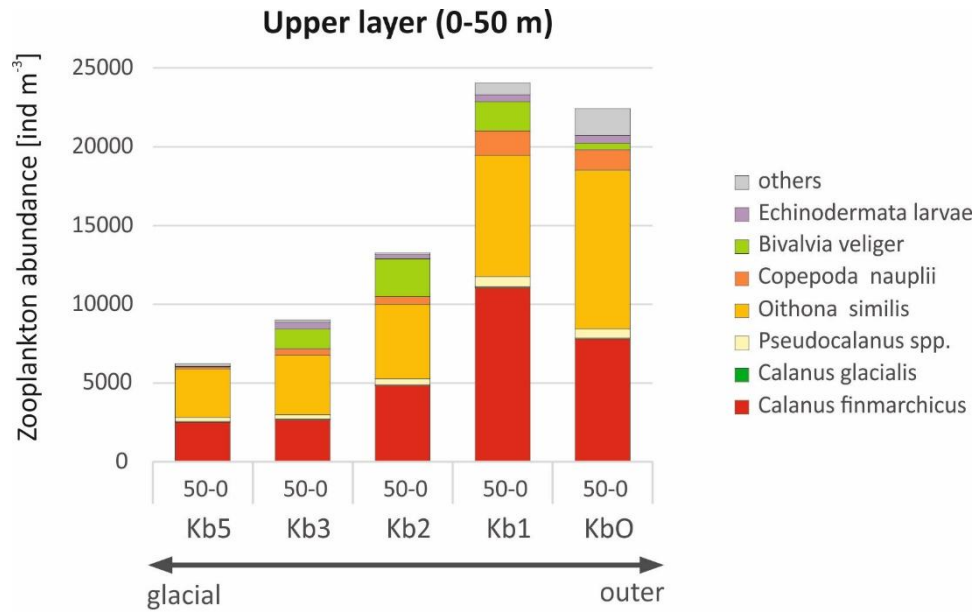


# Mesozooplankton



The abundance of zooplankton collected by MPS net at 5 stations within different zones of Kongsfjorden

# Mesozooplankton



# Mesozooplankton

